

welcome to your new home

Bishops Itchington, Southam

Warwickshire CV47 - Phase 1

2 Bedroom Terrace Houses | **Plots 52, 53 & 54**



Kitchen

Contemporary Kitchen
Stainless Steel Integrated Hob, Cooker
and Extractor
Vinyl Flooring to wet areas

Bathroom

Three Piece White Suite
Family Bathroom
Complimentary wall tiling
Downstairs WC
Vinyl flooring

General

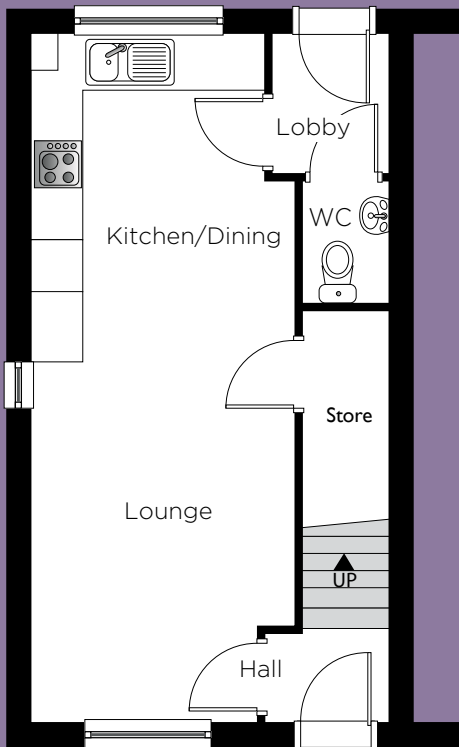
Part of the Bishop's Hill David Wilson
Development
10 year NHBC warranty
Stunning village location
Excellent transport links to the
M40 and Gaydon
Close Proximity to local amenities

CGI shown is for Illustrations purposes only.

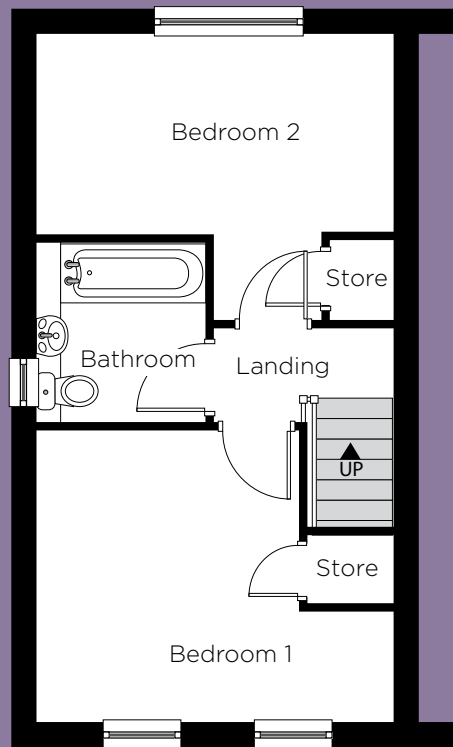
Bishops Itchington, Southam

Warwickshire CV47 - Phase 1

2 Bedroom Terrace Houses | **Plots 52, 53 & 54**



Ground Floor



First Floor

Please note:
This floorplan
is for plots 52
& 53

Plot 54 will be
the opposite
floor layout

Ground Floor

Lounge/	8.20m	x	3.15m	(max)
Kitchen/	26' 11"	x	10' 4"	(max)
Dining				

First Floor

Bed 1	4.25m	x	3.49m	(max)
	13' 11"	x	11' 5"	(max)
Bed 2	4.25m	x	2.39m	(max)
	13' 11"	x	7' 10"	(max)
Bathroom	2.72m	x	2.04m	(max)
	8' 11"	x	6' 8"	(max)

Total Floor Area:
69.70m²/750.24 sq.ft

Kitchen layouts are indicative only. Please consult with Platform staff for specific plans, room dimensions and kitchen layouts. The information is for guidance only and is not to be relied on as statements or representations of fact and they do not make or give representation or warrant whatsoever and do not form part of any contract. All room measurements shown in metric first followed by imperial underneath.

welcome to your new home

Bishops Itchington, Southam

Warwickshire CV47 - Phase 1

2 Bedroom Terrace Houses | **Plots 56, 57, 58 & 59**



Kitchen

Contemporary Kitchen
Stainless Steel Integrated Hob, Cooker and Extractor
Vinyl Flooring to wet areas

Bathroom

Three Piece White Suite
Family Bathroom
Complimentary wall tiling
Downstairs WC
Vinyl flooring

General

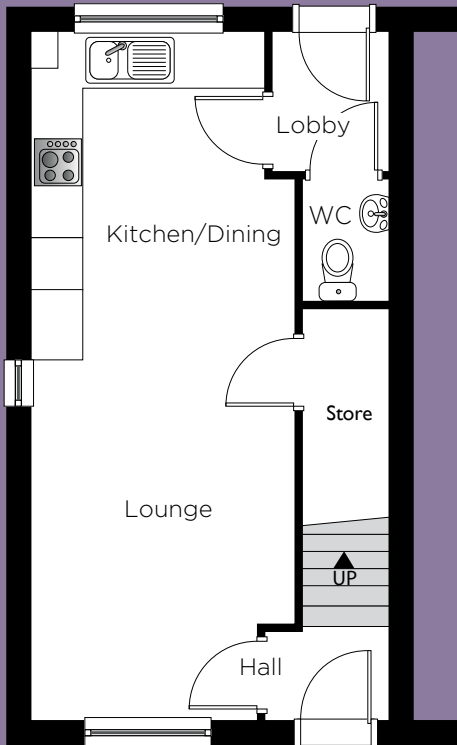
Part of the Bishop's Hill David Wilson Development
10 year NHBC warranty
Stunning village location
Excellent transport links to the M40 and Gaydon
Close Proximity to local amenities

CGI shown is for Illustrations purposes only.

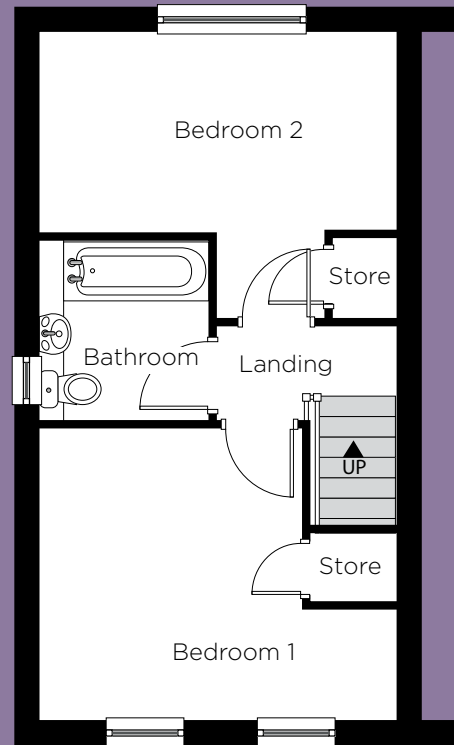
Bishops Itchington, Southam

Warwickshire CV47 - Phase 1

2 Bedroom Terrace Houses | **Plots 56, 57, 58 & 59**



Ground Floor



First Floor

Please note:
This floorplan
is for plots 58
& 59

Plots 56 & 57
will be the
opposite
floor layout

Ground Floor

Lounge/	8.20m	x	3.15m	(max)
Kitchen/	26' 11"	x	10' 4"	(max)
Dining				

First Floor

Bed 1	4.25m	x	3.49m	(max)
	13' 11"	x	11' 5"	(max)
Bed 2	4.25m	x	2.39m	(max)
	13' 11"	x	7' 10"	(max)
Bathroom	2.72m	x	2.04m	(max)
	8' 11"	x	6' 8"	(max)

Total Floor Area:

69.70m²/750.24 sq.ft

Kitchen layouts are indicative only. Please consult with Platform staff for specific plans, room dimensions and kitchen layouts. The information is for guidance only and is not to be relied on as statements or representations of fact and they do not make or give representation or warrant whatsoever and do not form part of any contract. All room measurements shown in metric first followed by imperial underneath.

welcome to your new home

Bishops Itchington, Southam

Warwickshire CV47 - Phase 1

3 Bedroom Terrace Houses | **Plots 55 & 60**

platform 
home
OWNERSHIP



Kitchen

Contemporary Kitchen
Stainless Steel Integrated Hob, Cooker
and Extractor
Vinyl Flooring to wet areas

Bathroom

Three Piece White Suite
Family Bathroom
Complimentary wall tiling
Downstairs WC
Vinyl flooring

General

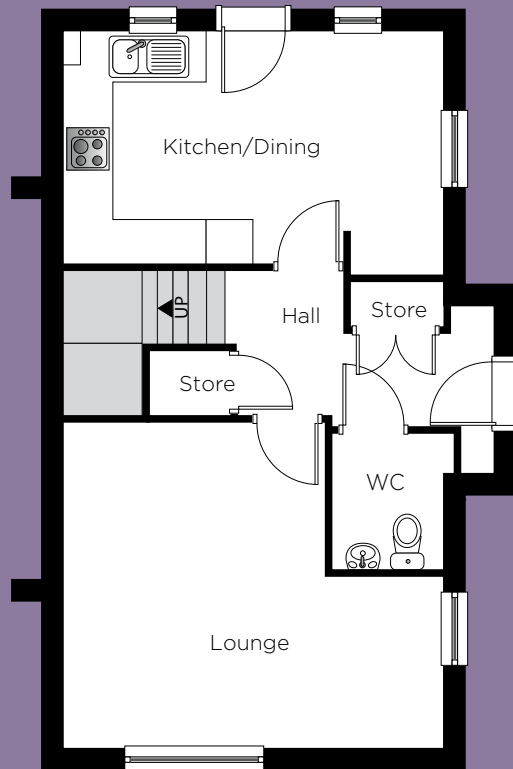
Part of the Bishop's Hill David Wilson
Development
10 year NHBC warranty
Stunning village location
Excellent transport links to the
M40 and Gaydon
Close Proximity to local amenities

CGI shown is for Illustrations purposes only.

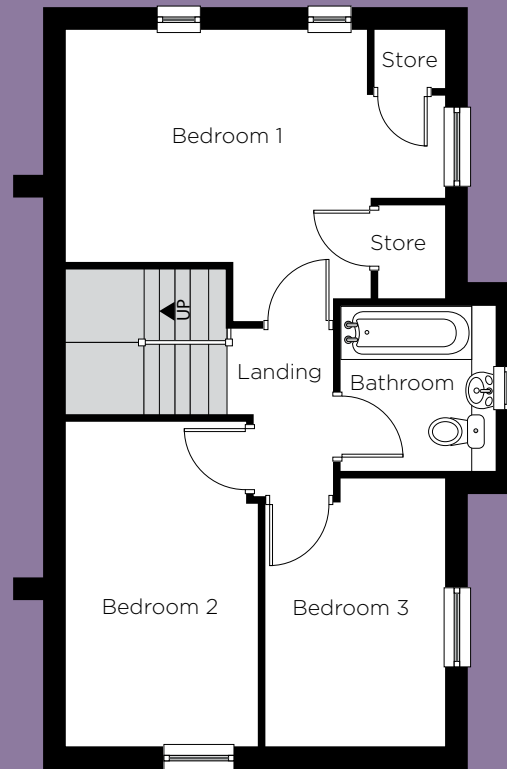
Bishops Itchington, Southam

Warwickshire CV47 - Phase 1

3 Bedroom Terrace Houses | **Plots 55 & 60**



Ground Floor



First Floor

Ground Floor

Kitchen/ Dining	5.02m 16' 5"	x	3.08m 10' 01"	(max)
Lounge	5.02m 16' 5"	x	4.29m 14' 1"	(max)

First Floor

Bed 1	5.02m 16' 5"	x	3.57m 11' 9"	(max)
Bed 2	4.29m 14' 1"	x	2.56m 8' 5"	(max)
Bed 3	3.57m 11' 9"	x	2.40m 7' 10"	(max)
Bathroom	2.18m 7' 2"	x	2.05m 6' 9"	(max)

Total Floor Area:
94.78m²/1020.24 sq.ft

Kitchen layouts are indicative only. Please consult with Platform staff for specific plans, room dimensions and kitchen layouts. The information is for guidance only and is not to be relied on as statements or representations of fact and they do not make or give representation or warrant whatsoever and do not form part of any contract. All room measurements shown in metric first followed by imperial underneath.

Bishops Itchington, Southam

Warwickshire CV47 - Phase 1

Site plan



Development

-  2 Bedroom Terrace
Plots 52, 53, 54, 56, 57,
58 & 59
-  3 Bedroom Terrace
Plots 55 & 60

Part of the **platform**
housing group

For further details please contact our sales team on: **0345 450 3995** or email: sales@platformhg.com

Contact Us:  www.platformhomeownership.com |  facebook.com/PlatformHomeOwnership

 twitter.com/PlatformNewHome |  instagram.com/platformhomeownership

Bishops Itchington, Southam

Warwickshire CV47 - Phase 1

House prices for all plots available



Houses available

Plot	House Type	Postal Address	Handover	100% Price	25% Share	Share Value	Monthly Rent	Service Charge	Sold/Reserved
52	2 Bedroom House End Terrace	7 Chimney Crescent, Bishops Itchington, Southam, CV47 2EH	February 2020						
53	2 Bedroom House Mid Terrace	9 Chimney Crescent, Bishops Itchington, Southam, CV47 2EH	February 2020						
54	2 Bedroom House End Terrace	11 Chimney Crescent, Bishops Itchington, Southam, CV47 2EH	February 2020						
55	3 Bedroom House End Terrace	15 Chimney Crescent, Bishops Itchington, Southam, CV47 2EH	February 2020						
56	2 Bedroom House Mid Terrace	17 Chimney Crescent, Bishops Itchington, Southam, CV47 2EH	March 2020						
57	2 Bedroom House End Terrace	19 Chimney Crescent, Bishops Itchington, Southam, CV47 2EH	March 2020						
58	2 Bedroom House End Terrace	21 Chimney Crescent, Bishops Itchington, Southam, CV47 2EH	March 2020						
59	2 Bedroom House Mid Terrace	23 Chimney Crescent, Bishops Itchington, Southam, CV47 2EH	March 2020						
60	3 Bedroom House End Terrace	25 Chimney Crescent, Bishops Itchington, Southam, CV47 2EH	March 2020						